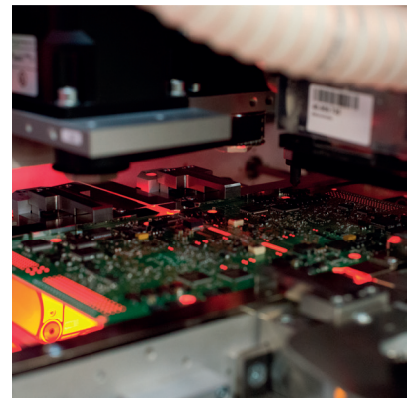
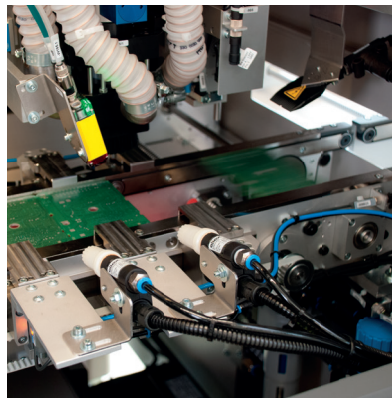


## DIVISIO Depaneling Systems

Compact Depaneling System

**DIVISIO 3000 Series**

# DIVISIO 3100



### Description

The DIVISIO 3100 is based on a rigid, stable substructure of a welded steel construction. It is equipped with a X/Y/Z axis system above the transportation level. PCB positioning is done with an integrated stopper unit mounted at the X-axis.

Therefore routing could be done at free definable Y-positions. Restriction is that no waste could be handled (e.g. borders, waste corners). With the devided transport system inside the machine the PCB can be separated.

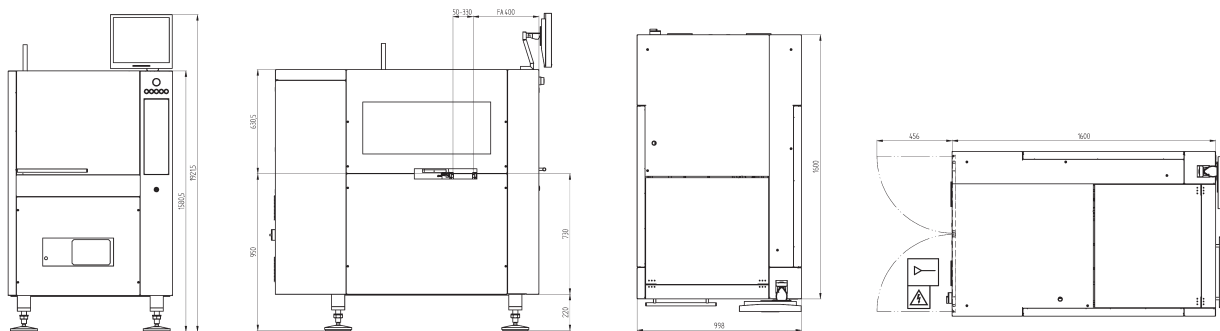
Subsequently the routed PCB can be transfered out of the machine. The manual width adjustment is done by a clamping lever.

### Features

- \_ Linear driven X/Y-axis
- \_ Servo driven Z-axis
- \_ No routing spindle
- \_ Disc spindle (on request)
- \_ Ionization unit
- \_ PC controlled machine with Windows based operating software
- \_ safety doors with interlock switches

### Options

- \_ Camera system for automatic cut inspection
- \_ Quick exchange head (Routing / Sawing)
- \_ Pass / Fail interface
- \_ Traceability function
- \_ Sawing disc break monitoring
- \_ Camera system for :
  - + Fiducial recognition
  - + Cut control
  - + Teach function
  - + Camera correction
  - + Bad-mark recognition
  - + Code read
- \_ Programmable stopper
- \_ Automatic width adjustment



## DIVISIO 3100

### Routing and/or sawing

#### Machine Configuration

Transport height	850 mm $\pm$ 50 mm
Max. transport width	<b>330 mm</b>
Operating side	Front of the machine

#### Panel Dimensions

Panel length	50 to 360 mm
Panel width	50 to 330 mm
Panel thickness	0.8 to 4.5 mm
Panel weight max.	4,5 kg
PCB weight max.	2,25 kg
Component height, spindle-side	8 mm; partial 18 mm (other height on request)
Component height, transport-side	40 mm

#### Installation Requirements

Power supply	400 V, 208 V 50 / 60 Hz, $\pm$ 10%
Power supply system	3L + N + PE
Fuse protection	3 x C16 A without ELCB
Power consumption	3,3 kW
Air supply	6 bar
Air consumption	120 NI/min

#### Machine Description

Length x Width x Height	1000 x 1600 x 1580 mm
Weight	1150 kg (standard equipped)
Speed X	X= 1000 mm/s
Speed Y	Y= 1000 mm/s
Speed Z	Z= 500 mm/s
Acceleration X	-X= 10 m/s <sup>2</sup>
Acceleration Y	Y= 10 m/s <sup>2</sup>
Acceleration Z	Z= 15 m/s <sup>2</sup>
Positioning	$\pm$ 0,01 mm (20°C $\pm$ 1°C)
Repeatability	$\pm$ 0,005 mm (20°C $\pm$ 1°C)
Cut accuracy	$\pm$ 0,08 mm with Vision System (20°C $\pm$ 1°C) $\pm$ 0,12 mm without Vision System (20°C $\pm$ 1°C)
Noise Level	< 75 dB(A) (possible deviations due to material mix of the panel)