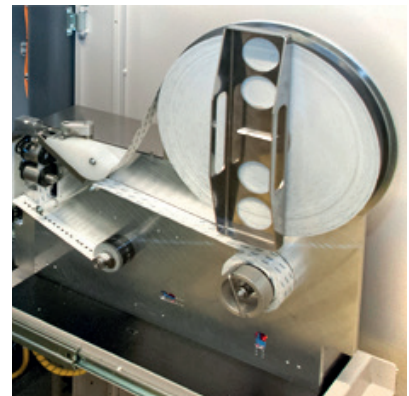
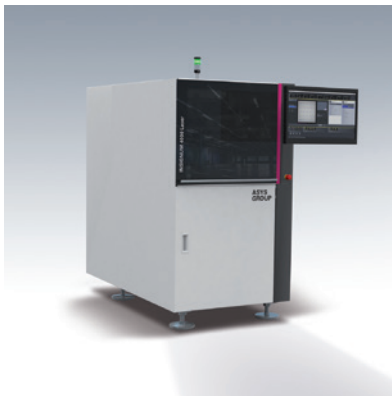


INSIGNUM Series – Power and Precision in Marking

Offline/Inline Laser Marking System

INSIGNUM Laser

INSIGNUM Variety



Description

The INSIGNUM Variety is a flexible system for marking and cutting labels via laser. In contrast to standard systems, the machine can mark many different types of materials and apply the labels onto components with variable heights. A particular highlight is the machine's ability to mark any label size.

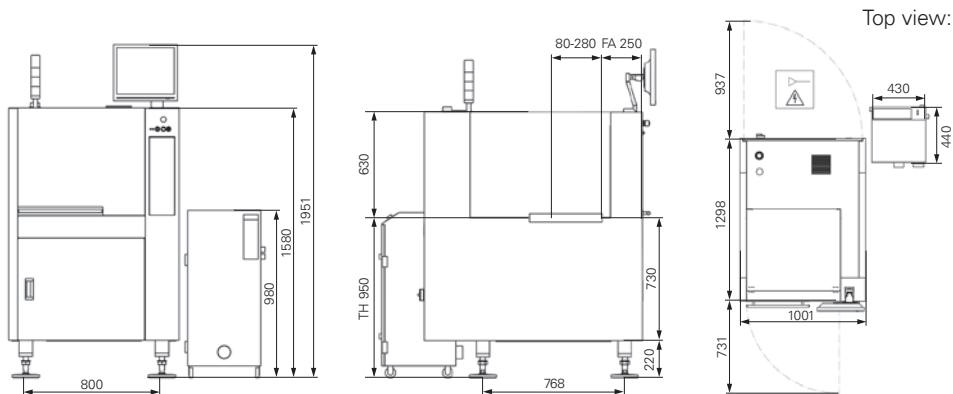
A laser-markable foil is fed from a roll into the machine. The laser subsequently marks the foil and cuts it to the required size in one step. The machine thus combines the best features of labelling and laser marking into one system. To reach the required accuracy, a camera system first measures the label. Using an adjustable servo driven axis in X, Y and Z, the label is positioned and applied to components up to a height of 40 mm in one continuous process. To ensure easy maintenance and handling, the label feeder is installed in a drawer which can be pulled out when new material is required. Product-specific data and labels can be configured and saved via the machine software.

Features

- _ Maintenance display for the feeder
- _ Labelling of different component heights
- _ Low maintenance
- _ Highly flexible

Options

- _ Rotating applicator head $\pm 360^\circ$
- _ Optical correction system
- _ Quick change nozzle system
- _ Fiducial
- _ Bad mark
- _ Orientation check
- _ Integrated flip station



INSIGNUM Variety

Machine configuration

Transport height	850 mm \pm 50 mm
Max. transport width	460 mm
Interface	Siemens, SMEMA
Transfer direction	From left to right/from right to left
Operating side	Front of the machine
Fixed rail	Front of the machine

Panel dimensions

Panel length	70 to 460 mm
Panel width	50 to 460 mm
Panel thickness	0.8 to 4.0 mm
Panel weight	Up to 3 kg
Component height	+/- 40 mm

Installation requirements

Power supply	230V / 115V, 50/60 Hz, \pm 10 %
Power supply system	L1 + N + PE
Power consumption	0.79 kW
Air supply	6 bar
Air consumption	<10 NI/min

Machine description

Length x width x height	1000 x 1298 x 1580 mm
Max laser window	105 x 105 mm
Codes	7.5 mil dots
Noise Level	< 75 dB

Upgrades

Machine networking via IC Net