



**ASYS
GROUP**

DIVISIO 6000

One Solution — Various Possibilities

High dynamic depaneling system with integrated testing and assembly solutions for maximum output

DIVISIO 6000

Scalability to Autonomy

The DIVISIO 6000 is a highly dynamic depaneling system for maximum output. The module can combine the process ,depaneling' with final ,assembling' or ,final testing'.

After the routing the separated PCBs will be placed in the middle of the machine on a turntable or on a shuttle system. Various processes can be integrated here, such as ICT testing, flashing , laser marking, AOI inspection, cleaning, mounting and many more. After the final assembly and test process a second handling axis will take over the PCB and transport it to the outlet. Here, different kinds of outlet variants like WPC carrier, tray stacker, flat belts or shuttles can be integrated.

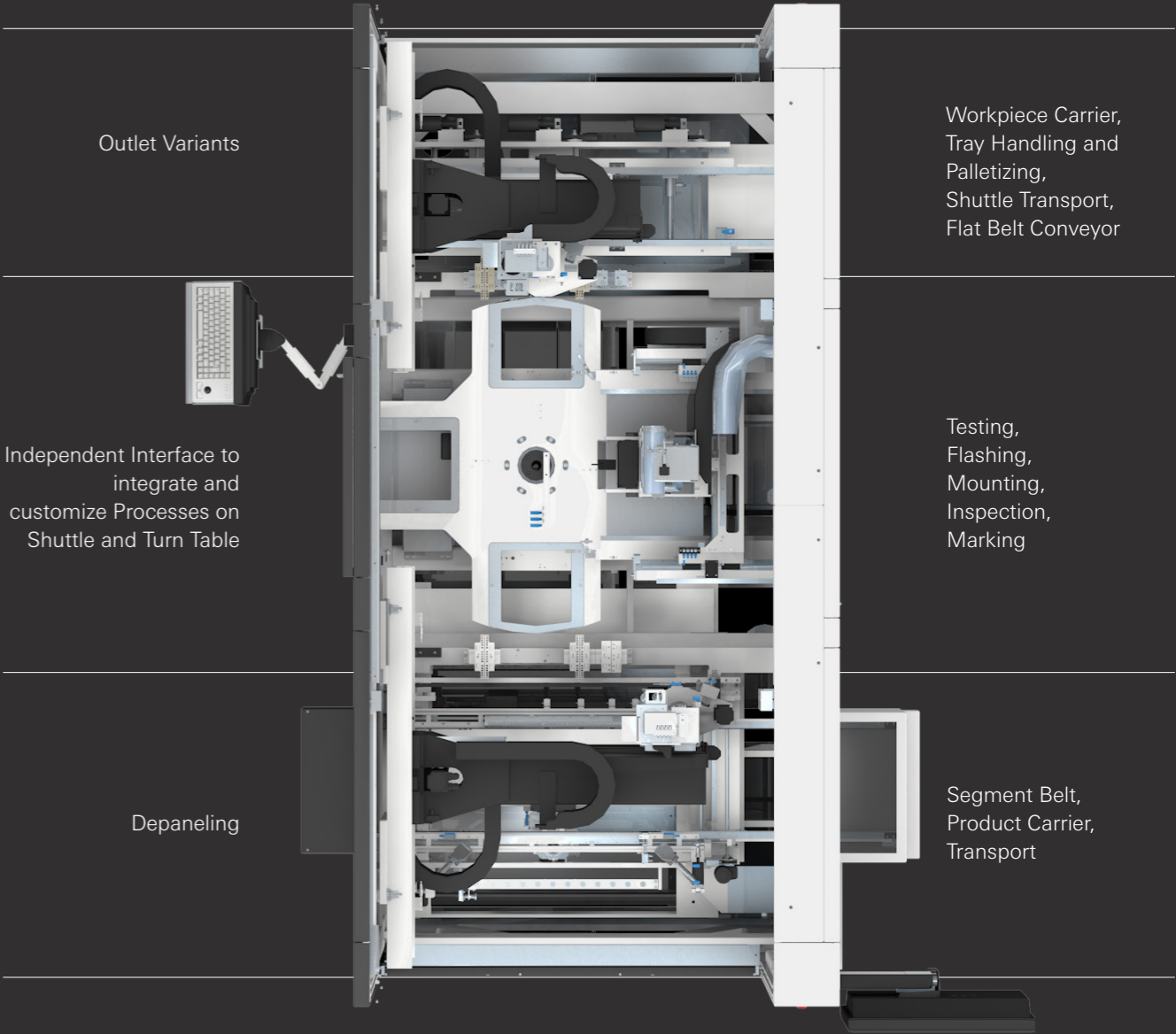
By using parallel processes and multigripper technology the DIVISIO 6000 can achieve very short cycle times.



DIVISIO 6000

Key Facts

- 100% tested PCB
- 2.5 sec cycle time
- Multiple technologies combined
- Depaneling and final testing



DIVISIO 6000: One Solution — Various Possibilities



Integrated machine functions

- 3 segment inlet conveyor for short panel change time
- Magazine for up to 12 router bits
- 2 handling axis for loading and unloading PCBs
- Storage place for 5 product specific grippers
- Different kind of outlet variants



Benefits

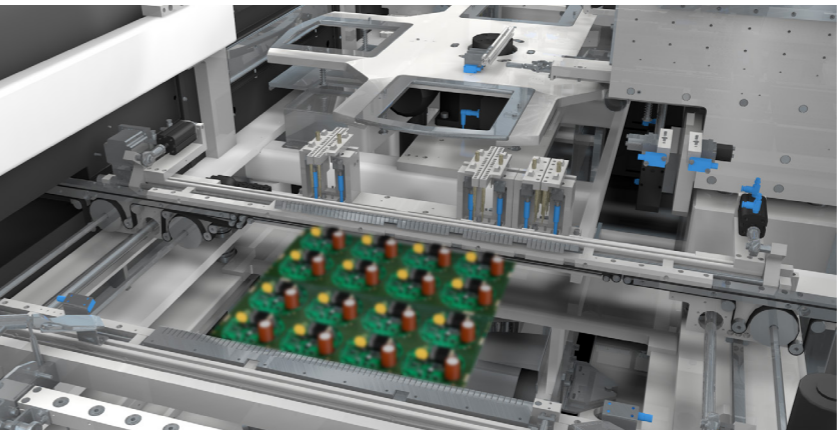
- All in one solution
- Small footprint in comparison to a final testing line
- Shortest cycle times due to parallelization of processes
- Automatic program change



From parts to pallet handling with ASYS TECTON

- Tray infeed and outfeed on one side with PARIO 800
- Manual or automated loading and unloading in combination with AMR and Material Logistics
- Handling of all tray types, including blister and disposable trays

DIVISIO 6000: Turntable Features

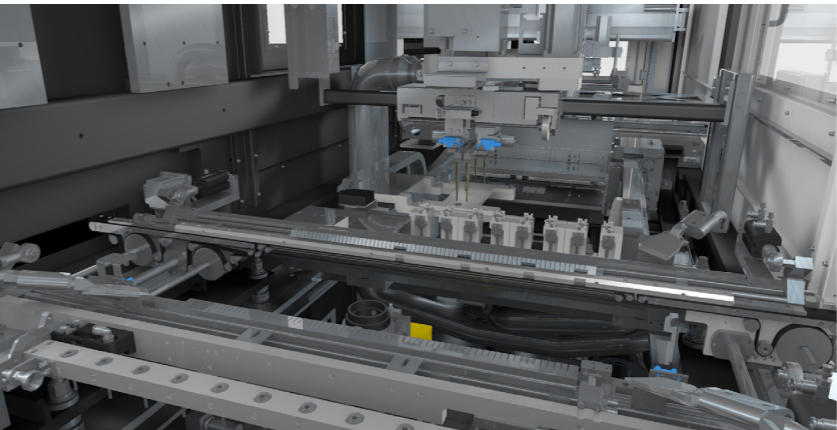


Features

Turntable with 4, 8 or 12 positions to integrate additional processes like

- Testing
- Cleaning
- Marking

DIVISIO 6000: Shuttle Features



Features

Shuttle transport with 1, 2 or 4 integrated shuttles for

- Cleaning
- AOI Inspection
- Flipping

Smart Options

Innovations that make your work easier



Camera

Camera to check the fiducial and automatically adjusting the offset of the panel before routing.



AOI

100% cut inspection to check all the routed tabs and visualization in SPC.



Offline Programming

Create new programs without interrupting production to improve your throughput and ROI.



Self-Monitoring

All tools like grippers, shuttles or workpiece carriers are monitored and checked if they are matching the loaded program.



Tool Monitoring

Tools are checked for type and diameter. The machine recognizes if a router is broken or lifetime is ended and automatically changing it.

Smart Features

Standards that change the way you work

User Interface



The SIMPLEX user interface sets new standards in machine operation. Complex input tasks can be performed intuitively on touch displays.

Transport



After depaneling and testing the PCB can be placed in different kind of storage or transport systems. Tray stacker, shuttle systems or WPC can be integrated to use the DIVISIO as island or as well in a line concept.

Gripper



Product specific grippers allow the machine to handle all kind of PCBs. A Multigripper can handle up to 4 single PCBs at the same time to reduce the cycle time. Even rigid-flex PCBs can be handled.

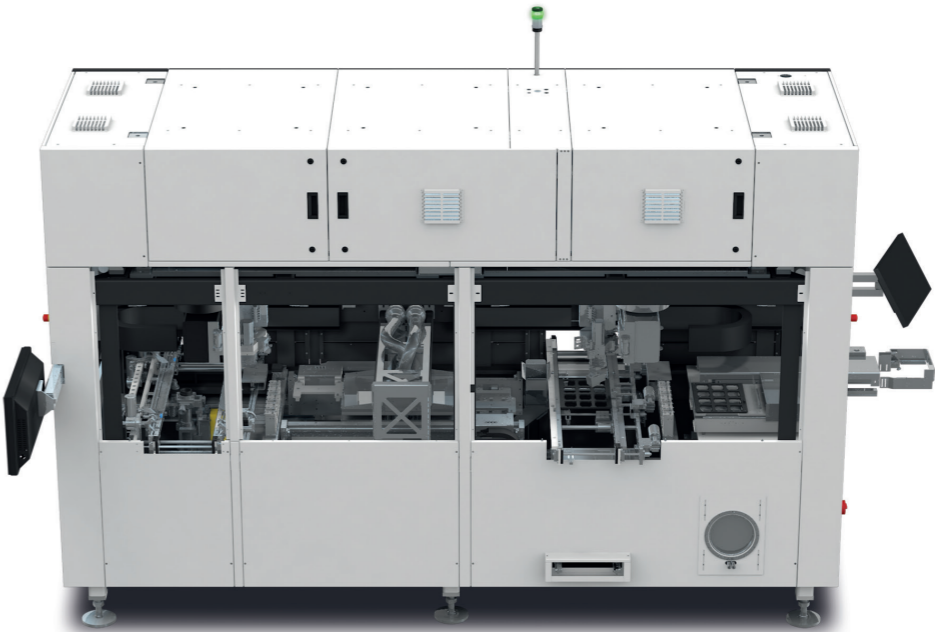
Cleaning



To guarantee higher quality, additional cleaning systems can be implemented to remove dust on the PCBs.

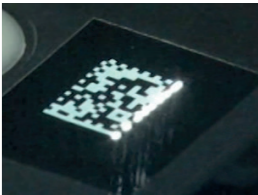
Smart Combination

Solutions that Meet your Needs



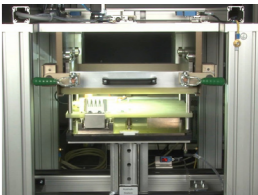
Laser Marking

Marking PCBs after the depaneling and testing



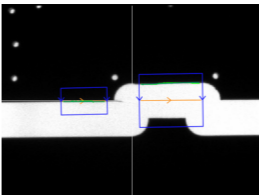
Optical Analysis

Integration of measuring equipment to check brightness and color of LED



AOI

Cut inspection to check the accuracy of the depaneling



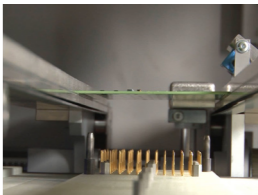
Cleaning

Reduction of dust particles on PCB to improve the quality of the final product



ICT / Flash

Integration of equipment for In Circuit Test and Flash the PCBs



**ASYS
GROUP**

Transforming Ideas
Automate, Digitalize & Connect

ELECTRONICS

AUTOMATE, DIGITALIZE & CONNECT

LIFE SCIENCE

ENERGY



Visit our Website:
www.asys-group.com

ASYS Automatisierungssysteme GmbH, Benzstraße 10, 89160 Dornstadt, Germany, www.asys-group.com

Subject to change without notice. Some general descriptions and performance characteristics may not be applicable to all products. Technical specifications are subject to change without notice. Only features and technical data provided in purchasing contract are legally binding.

Printed in Germany

ASYS Group_DIVISIO_6000_Brochure_EN_June_2024