

XSDC 601-01



TECHNICAL DATA CABINET

External dimensions:	(W x H x D) 701,5 x 2060 x 735 mm
Internal dimensions:	(W x H x D) 550 x 1526 x 579 mm
Weight:	113 kg
Weight on shelf:	40 kg
Body:	Full stainless steel body
Shelves:	3 shelves, 530 x 500 mm.
Volume:	466 L
Electric supply:	230 V / 50 Hz (230 / 60Hz optionally available)
Power consumption:	+/- 60 - 100 W (depending on ambient temperature)
Temperature accuracy:	10°C, +/- 2°

XSDC SERIES

Our XSDC series is suitable for solder paste storage. The cabinets have a powerful cooling unit to create a stable temperature profile. A 60 mm insulation layer maintains a constant temperature with the least amount of energy. Thanks to a large door with viewing window, the clarity is given.

SERIE-1 DISPLAY SETTINGS

- Nominal Value Temperature
- Temperature Alarm
- Delay Temperature Alarm
- Doors Alarm
- Automatic Defrosting



STANDARD FEATURES

✓ Sensor	Precision NTC thermistor
✓ ESD Safe exterior	ESD stainless steel housing
✓ Cooling unit	Cooling from 0 - 12°C. Coolant R452a
✓ Stationary unit	Height adjustable feet
✓ Power supply	Power cord 5 meter with IEC plug
✓ Vaporization	Automatic water evaporation
✓ Lighting	LED-Interior lights

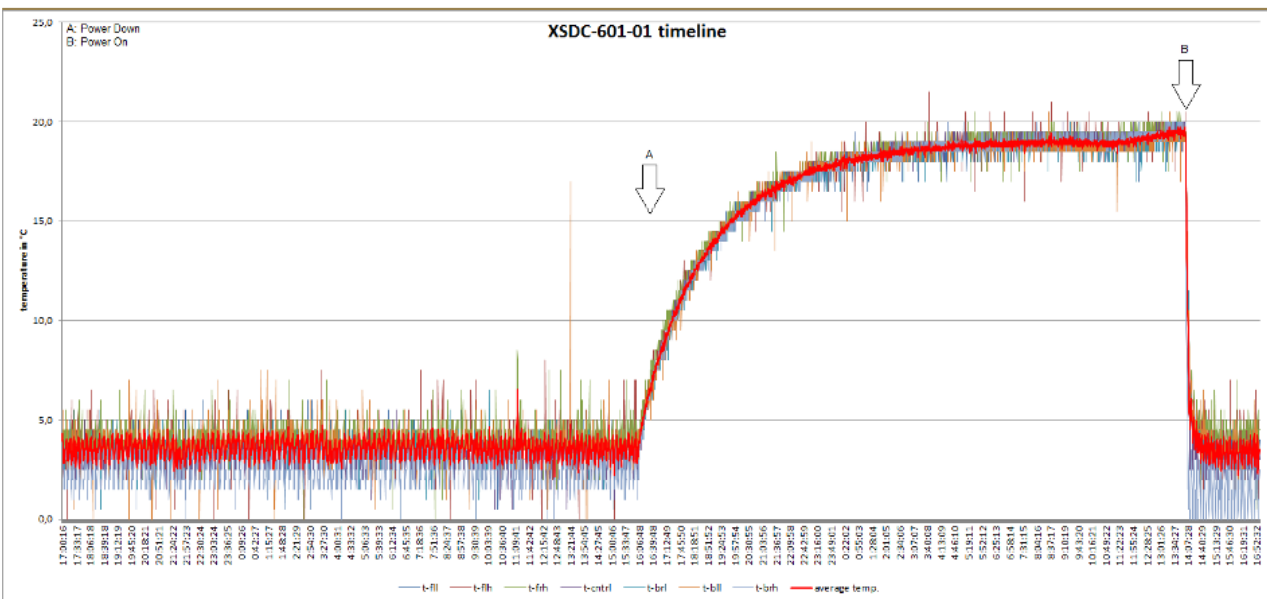
BENEFITS

✓ Cooling recovery time	+/- 20 Minutes after approx. 10 hours after power failure
✓ Service	Easy to service, low maintenance

COOLING UNIT

Operating Temperature	0°C - 40°C
Power supply	230 V / 50 Hz
Compressor	407W
Refrigerant	R452a

PERFORMANCE TEST

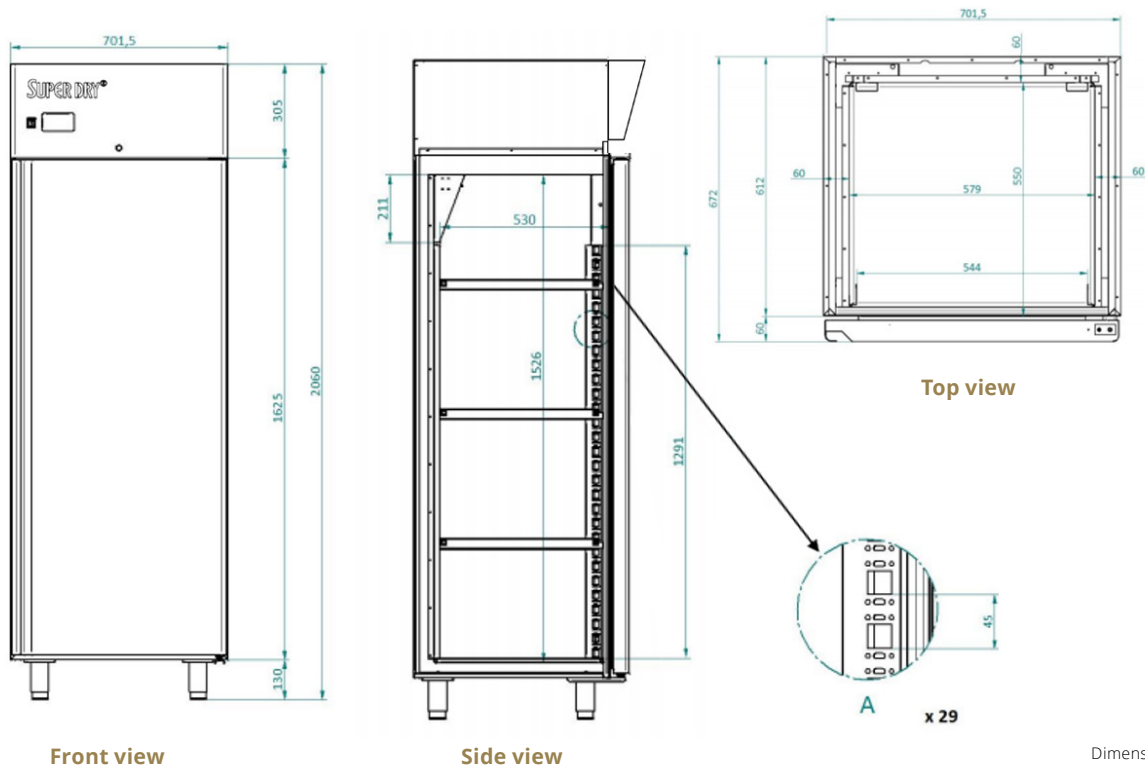


TEST CONDITIONS

Type of test probe	9 x Hygroclip HC2A-S
Accuracy	±0.8 %RH / ±0.1 K, at 10...30 °C
Location of sensors	Every corner + center
Ambient conditions	±20°C
Activities	A: Power down B: Power on

Performance test shown above is a timeline of 24 hours with a forced power down.

TECHNICAL DRAWINGS



COOLING CABINET OPTIONS

ITEM	NUMBER
Shelf XSDC-601, Painted, Incl. brackets	47002001
Door opening pedal	47000145
FIFO shelf for jars, XSDC-601	55550024

