



Complete NPI Software Solution for PCB Assembly

Import of **CAD** data

Program creation for **Pick & Place Machines**

Program creation for **SPI & AOI**

Program creation for **Testers**

Work instruction editor

Test coverage analysis

Repair assistance

Data analysis



**OFFLINE
PROGRAMMING**

100% made by Accelonix

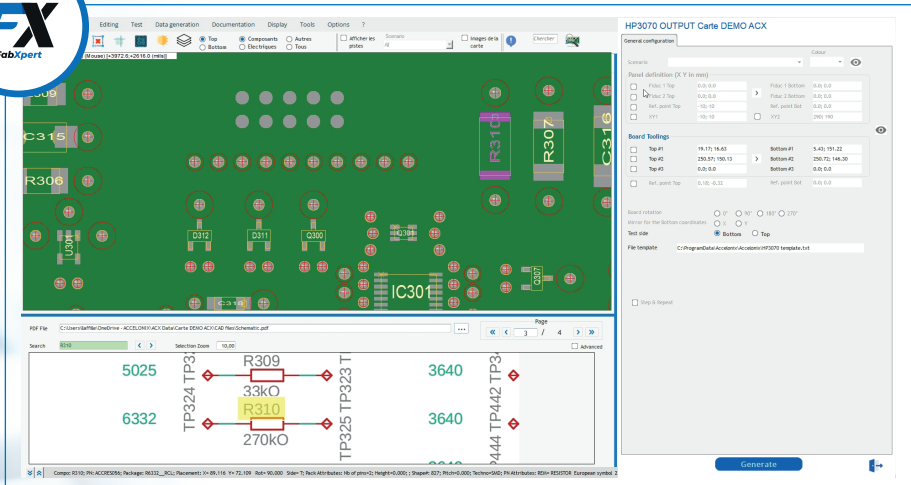


Accelonix delivers innovative solutions to electronics organisations around the world
www.accelonix-software.com

Accelonix Software is a **strategic division** of the Accelonix Group, **established over a decade ago** to meet the growing demand from our customers for software solutions tailored to the world of **PCB manufacturing**.

FabXpert® Program Creation for Manufacturing and Testing

FabXpert is a software solution and **digital data management** tool designed for the electronic circuit manufacturing industry. It addresses various needs by offering **specialized modules** for manufacturing and testing. FabXpert is part of a software suite **based on ease of use, creative support, and rapid development**.

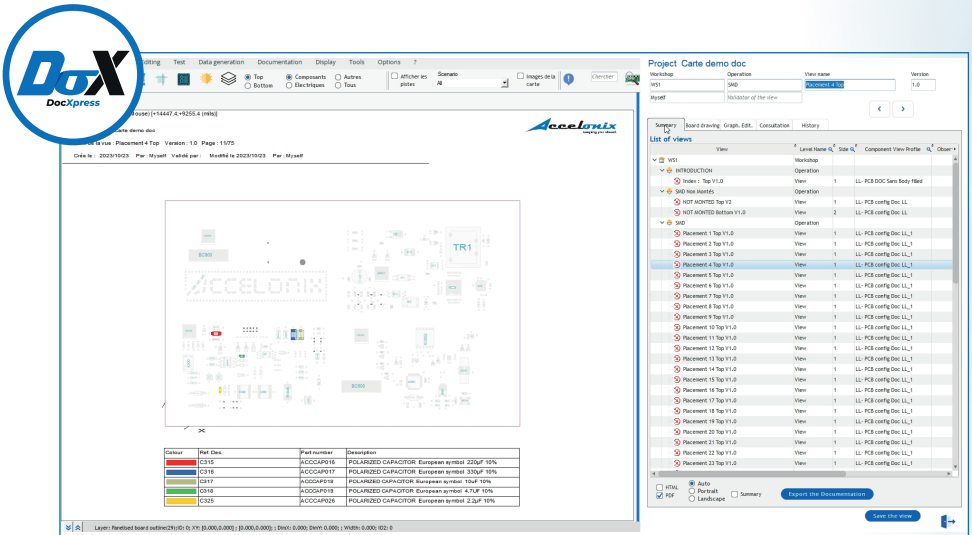


HIGHLIGHTS

- ✓ Availability of numerous **CAD interfaces**
- ✓ Ultra-fast and customizable PCB viewer
- ✓ Link between the graphic representation of the PCB and the electrical diagram
- ✓ Efficient importer of graphic bills of materials, text, and Excel formats
- ✓ User-assistance-oriented editing menus to prevent the omission of important information
- ✓ Consideration of component rotation offsets for placement
- ✓ Distribution of components by scenario, automatically created from the bill of materials
- ✓ Creation tool for **Classic IKT** (Bed of Nails) and **Flying Probe Testers**
- ✓ Integrated **DFT Module**, accessibility, and **Test Coverage**
- ✓ Numerous output interfaces for placement, inspection, and testing machines

DocXpress® Work Instruction Creation

One of the **crucial steps** in PCB manufacturing is creating detailed instruction to **guide the production process**. DocXpress is designed to streamline and optimize this process, offering **dynamic and user-friendly features** to meet the specific needs of the electronics industry.



HIGHLIGHTS

- ✓ **Dynamic** creation and modification of instruction
- ✓ Independent configuration of each view, component grouping, colours...
- ✓ **Intuitive** component selection with a **user-friendly query tool**
- ✓ Creation and reuse of page templates, views, and instructions
- ✓ Import of images and external documents
- ✓ Integrated graphical editor
- ✓ **Simplified user navigation** with separate design and navigation modes
- ✓ Dynamic link with the **PCB viewer**
- ✓ Integration of **PCB images** for enhanced display
- ✓ Printing in the form of **vectorized PDFs**
- ✓ **Paperless orientation** for quick update and distribution of instructions
- ✓ **Data sharing** with other Accelonix suite software

CoverageXpert® Interactive Test Coverage Analysis

CoverageXpert is an interactive, non-programmatic tool for **analyzing test coverage** of an electronic board and **generating detailed reports** on this coverage.



Ref. Des.	Q1	Part number	Q2	Class	Type	Q3/Q4/Q5	Th. Value	Q6	Q7	Min. Value	Q8	Max. Value	Preferenc. (Q9)	Value (Q10)	Substanc. (Q11)	Rea. (Q12)	Rea. (Q13)	Rea. (Q14)	Rea. (Q15)	Rea. (Q16)	Rea. (Q17)	Rea. (Q18)	Rea. (Q19)	Rea. (Q20)		
USA		P0008801		INTEGRATED CIRCUIT	I	0,3	0,8						100	0	100	0	100	0	100	0	100	0	100	0	100	0
U1P		P0008807		INTEGRATED CIRCUIT	B	0,3	0,8						100	0	100	0	100	0	100	0	100	0	100	0	100	0
U1P2		P0008807		INTEGRATED CIRCUIT	T	0,3	0,8						100	0	100	0	100	0	100	0	100	0	100	0	100	0
U02		P0008807		INTEGRATED CIRCUIT	T	0,3	0,8						100	0	100	0	100	0	100	0	100	0	100	0	100	0
U04		P0008807		INTEGRATED CIRCUIT	T	0,3	0,8						100	0	100	0	100	0	100	0	100	0	100	0	100	0
U06		P0008807		INTEGRATED CIRCUIT	T	0,3	0,8						100	0	100	0	100	0	100	0	100	0	100	0	100	0
U00		P0008807		INTEGRATED CIRCUIT	T	0,3	0,8						100	0	100	0	100	0	100	0	100	0	100	0	100	0
C1		P0001237		CAPACITOR	B	47NF		10%	40,89 pF	53,11 pF			100	100												
C2		MC_C		CAPACITOR	MC_C	B							100													
C3		MC_C		CAPACITOR	MC_C	B							100													
C7		P0001237		CAPACITOR	MC_C	B	47NF		40,89 pF	53,11 pF			100	100												

Summary: Average: 99,55, Value: 66,70, Rotation: 97,35. Contact: 71,36, Solder: 72,82.

Ref. Des.	Pin(s)	Test name	Q1	Test type	Q2	Rate name	Q3	Tester	Q4	Expected Value	Q5	Max. Test Value	Q6	Min. Test Value	Q7	Preferenc. (Q8)	Value (Q9)	Substanc. (Q10)	Rea. (Q11)	Rea. (Q12)	Rea. (Q13)	Rea. (Q14)	Rea. (Q15)	Rea. (Q16)	Rea. (Q17)	Rea. (Q18)	Rea. (Q19)	Rea. (Q20)		
L11	L11	L11		L	CHISEL			TEKAW9000		200,0 UH		185,4 UH p		238,6 UH p		0	0													
L11	L11 B(5)	B(5)		CHISEL_B(5)				TEKAW9000		1,00 D		0,9 D		1,1 D		100	0													
L11	L11 B(6)	B(6)		CHISEL_B(6)				GOSEPL Option								100	0													
L11	L11 (10A)	Just		CHISEL_Just				GOSEPL Option								100	0													
L11	L11 (2)	L11 (2A)		Just	CHISEL_Just			GOSEPL Option								100	0													
L11	L11 (3)	L11 (3A)		Just	CHISEL_Just			GOSEPL Option								100	0													
L11	L11 (4)	L11 (4A)		Just	CHISEL_Just			GOSEPL Option								100	0													

HIGHLIGHTS

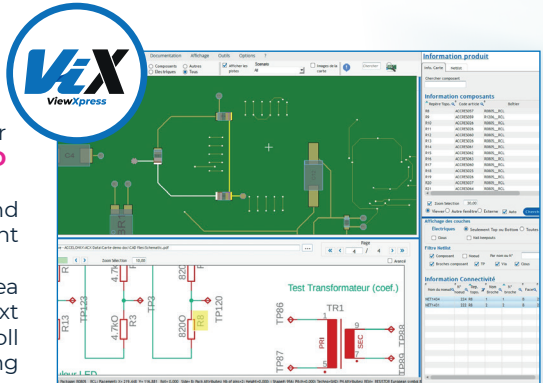
- ✓ Validation and analysis of product accessibility
- ✓ Comparison of **CAD** and **BOM** data with the complete provided coverage of multiple processes: **AOI**, **ICT**, **FPT**, **manual inspection**, **SPI**, etc.
- ✓ Creation of test definitions for **predictive test coverage**
- ✓ For each component, associated tests are displayed, and the resulting test scores are calculated based on rules defined by component class and test type.
- ✓ Prioritization of scores highlights components that appear to be insufficiently tested
- ✓ Calculation rules for scores are configurable, allowing for interactive analysis adjustments to account for card-specific characteristics, certain tests, and specific testers
- ✓ Creation of reports in **PDF** and **HTML** formats

ViewXpress® Data Viewer for PCBs

ViewXpress is the **data viewer** for the Accelonix software platform. It can read all project data, **from CAD to electrical schematics and documentation** created with the **DocXpress module**.

HIGHLIGHTS

- ✓ Project manager
- ✓ Display of the view for components defined by **CAD data**
- ✓ Configuration of colors and shapes to use for component drawing
- ✓ Mouse wheel zoom, area selection, toolbar, context menu, best zoom... Mouse scroll for viewer scrolling via dragging
- ✓ Device selection in the viewer by mouse click and display of related information (components and netlist)
- ✓ Search for a component and equipotential with automatic selection in the viewer
- ✓ Link between the graphical representation of the board and the electrical schematic
- ✓ Display of the list of components and their attributes, list of packages and their drawings
- ✓ Selection of **Top or Bottom view**
- ✓ Display of mouse position in mm and mils, distance measurements, and display of documentation created with the **DocXpress module**



RepairXpert® Diagnostic and Repair Station

RepairXpert is a repair station that allows users of testers to **access innovative and unique features**. In just a few clicks, the software is operational. Minimum configuration and **maximum simplicity** make this station an extremely **efficient tool**.

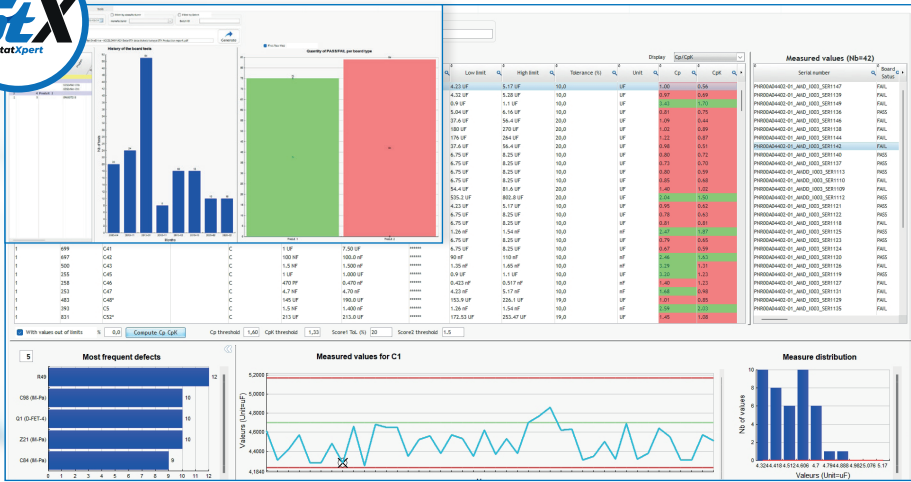


HIGHLIGHTS

- ✓ **Automatic playback mode** for Tester files located in the configured directory and extraction of faults/defects
- ✓ Storage of test data in a database for **traceability** of boards.
- ✓ Barcode input field for product identification and display of the defect list for the entered serial number
- ✓ For a given defect, repair history (repair codes and comments) for identical defects
- ✓ **Automatic panel definition** using Tester data (only available on certain testers).
- ✓ Display of the **list of pins** for a node or component
- ✓ For each repaired fault, entry of a repair code and generation of a repair ticket

StatXpert® Statistical Analysis of Production Data

The StatXpert software provides both **statistical analysis tools** in the form of **Cp, CpK, standard deviation calculations**, and an **interactive graphical tool** that visualizes the **changes in measurements** over time without any prior configuration work.



HIGHLIGHTS

- ✓ **Calculation of key statistical indicators** to validate the stability of your programs, accuracy, trends over time, and the impact of ongoing production changes
- ✓ It offers a **wide range of controls, sorting, and filtering options** that facilitate analysis by correlating measurements and results
- ✓ It allows for quick and easy data collection from your testers and production machines
- ✓ Creation of **numerous integrated reports** in PDF format
- ✓ Data analysis to quickly **identify technical issues** (measurement instability, debugging problems) and initiate improvements
- ✓ **Highly configurable automation:** automatic data collection, product selection for automation, report creation based on user-defined parameters, and report generation triggers

Accelonix

SOFTWARE

www.accelonix-software.com

 Accelonix Software

100% made by Accelonix

