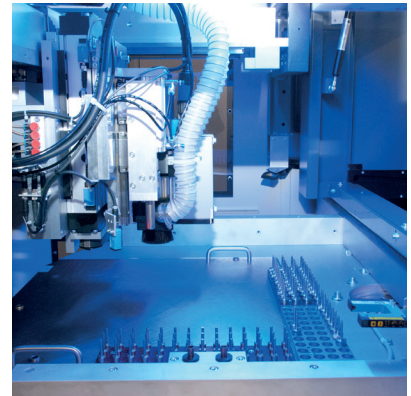
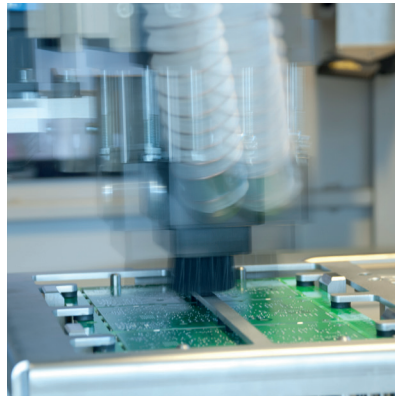
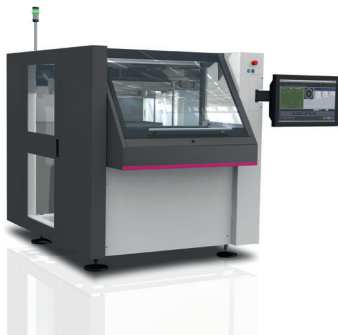


## DIVISIO Depaneling Systems

Semi-automatic Depaneling System

**DIVISIO 2000 Series**

# DIVISIO 2000/2100/2300



### Description

The **DIVISIO 2000** is a semi-automatic system for stress-free depaneling of PCBs. The X- and the Y-axes are both equipped with highly dynamic linear motor technology, the Z-axis is servo-driven. Already existing product carrier adapters can easily be used with this machine. The vacuum system is optimized with the help of the Tornado-Effect.

The system offers a cost-efficient solution for customers who wish to depanel stress-free but who do not produce such a high volume to justify the acquisition of an inline machine. By positioning the routing axis either above or below the electrically driven rotary table the **DIVISIO 2100** has the flexibility to represent a verified production process. It can therefore be used without any restrictions as back-up for the inline production.

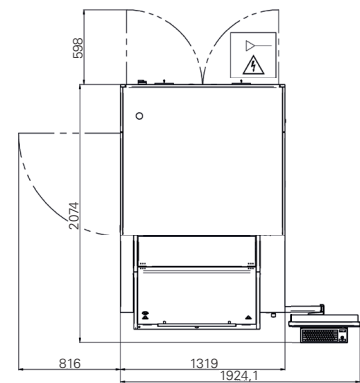
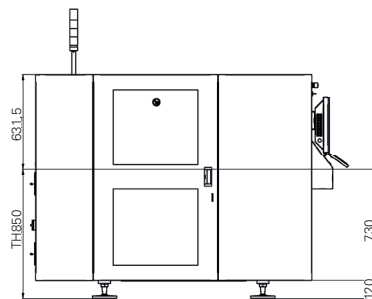
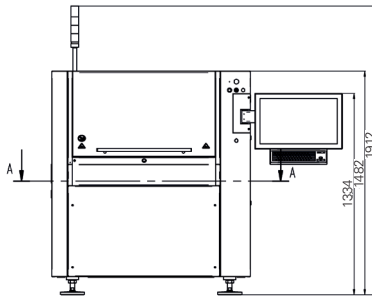
The **DIVISIO 2300** commands the largest working area within the entire DIVISIO depaneling systems.

### Features

- \_X- and Y-axis with high-end linear motors
- \_Z-axis servo-motor-driven
- \_Rotary-table with two working areas
- \_Touch screen monitor
- \_HMI offers comfortable operation
- \_Ionization unit
- \_Automatic tool change with 2 routers per magazine
- \_Complete tool management
  - + Breakage control
  - + Length verification
  - + Diameter check
  - + Life span monitoring
  - + Dynamic utilization of full router bit
- \_ Automatic maintenance schedule

### Options

- \_Routing module (from top / bottom) or sawing unit (from top)
- \_Program creation with ASYCAM CAD import
- \_Camera system
  - + Fiducial recognition
  - + Cut control
  - + Program creation with teach function
  - + Camera correction
  - + Bad mark recognition
  - + Code reading
- \_Vacuum exhaust system
- \_Manual suction unit
- \_Low pressure control
- \_Adapter technology:
  - + Product-specific adapters
  - + Flexible adapter functions
  - + Adapter coding for up to 255 adapters
- \_Upgrade of Automated Router bit change to 8 bits
- \_Traceability function
- \_Database Interface



## DIVISIO 2000/2100/2300

	DIVISIO 2000	DIVISIO 2100	DIVISIO 2300
	Routing and/or Sawing	Routing and/or Sawing	Routing
<b>Machine Configuration</b>			
Transport height	850 mm ± 50 mm	850 mm ± 50 mm	850 mm ± 50 mm
Operating side	Front of the machine	Front of the machine	Front of the machine
Panel (max. LxB)	460 x 360 mm	460 x 460 mm	720 x 500 mm
Routing from top	460 x 360 mm	460 x 460 mm	720 x 500 mm
Routing from bottom	-	460 x 460 mm	-
Sawing from top in Y or X	460 x 360 mm (Option)	460 x 460 mm (Option)	-
Sawing from top in X and Y	-	460 x 360 mm (Option)	-
NC-Axis	X/Y/Z- Axis		
<b>Panel Dimensions</b>			
Panel length	50 bis 460 mm	50 to 460 mm (508 mm)	50 mm x 720 mm
Panel width	50 bis 360 mm	50 to 460 mm	50 mm x 500 mm
Panel thickness	0.5 bis 4.5 mm		
Panel weight max.	4,5 kg		
Component height, spindle-side	8 mm; partial 18 mm (other height on request)		
Component height, adapter-side	40 mm; partial 70 mm (depending of fixing pins)		
<b>Installation Requirements</b>			
Power supply	400 V, 208 V 50 / 60 Hz, ± 10%		
Power supply system	3L + N + PE		
Fuse protection	3 x C16 A without ELCB		
Power consumption	3,3 kW		
Air supply	6 bar		
Air consumption	120 NI/min		
<b>Machine Description</b>			
Length x Width x Height	1320 x 1970 x 1480 mm	1620 x 2270 x 1480 mm	1880 x 2796 x 1522 mm
Weight	1150 kg ((standard equipped)		
Axis speed max.	X,Y= 2000 mm/s, Z= 1000 mm/s		
Axis acceleration max.	X,Y= 20 m/s², Z= 15 m/s²		
Positioning	≤ ± 0,01 mm (bei 20°C ±1°C)		
Repeatability	≤ ± 0,005 mm (bei 20°C ±1°C)		
Depaneling accuracy	± 0,08 mm with Vision System (bei 20°C ±1°C) ± 0,12 mm without Vision System (bei 20°C ±1°C)		
Noise	< 75 dB(A) (possible deviations due to material mix of the panel)		

**ASYS  
GROUP**

**ASYS Automatisierungssysteme GmbH**  
Benzstrasse 10,  
89160 Dornstadt, Germany  
Tel (+49) 7348 9855 0  
Fax (+49) 7348 9855 91  
info@asys.de

For more information visit  
[www.asys-group.com](http://www.asys-group.com)

Subject to change without notice.  
Some general descriptions and performance characteristics may  
not be applicable to all products. Technical specifications are  
subject to change without notice. Only features and technical  
data provided in purchasing contract are legally binding.

Printed in Germany